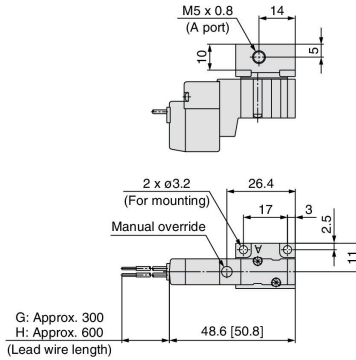


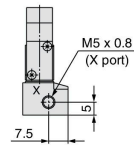
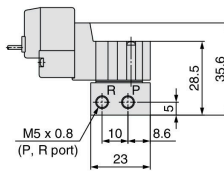
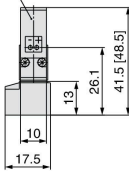
Base Mounted (With Sub-plate)

* [] for AC

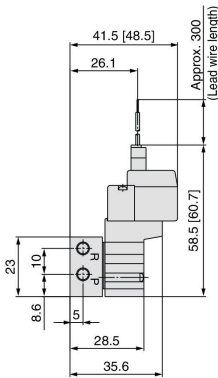
Grommet (G), (H): SYJ3□4-□^G□□-M5



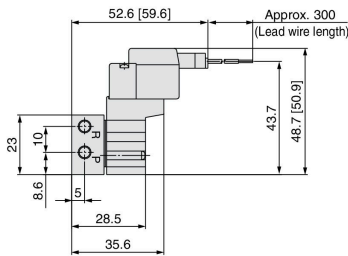
(Light/surge voltage suppressor)



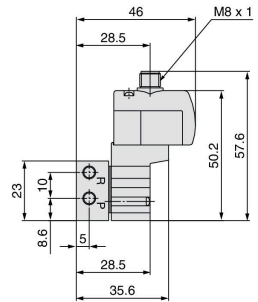
**L plug connector (L):
SYJ3□4-□L□□-M5**



**M plug connector (M):
SYJ3□4-□M□□-M5**



**M8 connector (WO):
SYJ3□4-□WO□□-M5**



* Refer to page 1217 for dimensions with connector cable.

SYJ

VQZ

VP

VG

VP3